



*Private Label*  
Product Catalogue

# Welcome to Natural Skincare Formulation LAB!

**Are you a start-up or salon/spa owner who is ready and excited to start your own professionally formulated skincare range?**

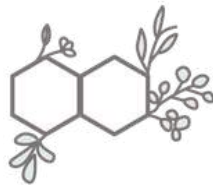
*You're in the right place!*

**Easy and stress free process**



**Made in UK**

**Recommended 200% markup**



**Professionally formulated**

**Low risk and low MOQ's**



**Ethical & cruelty free**

**Brand as your own, and stand out**



**100% vegan**



**No parabens or SLS**



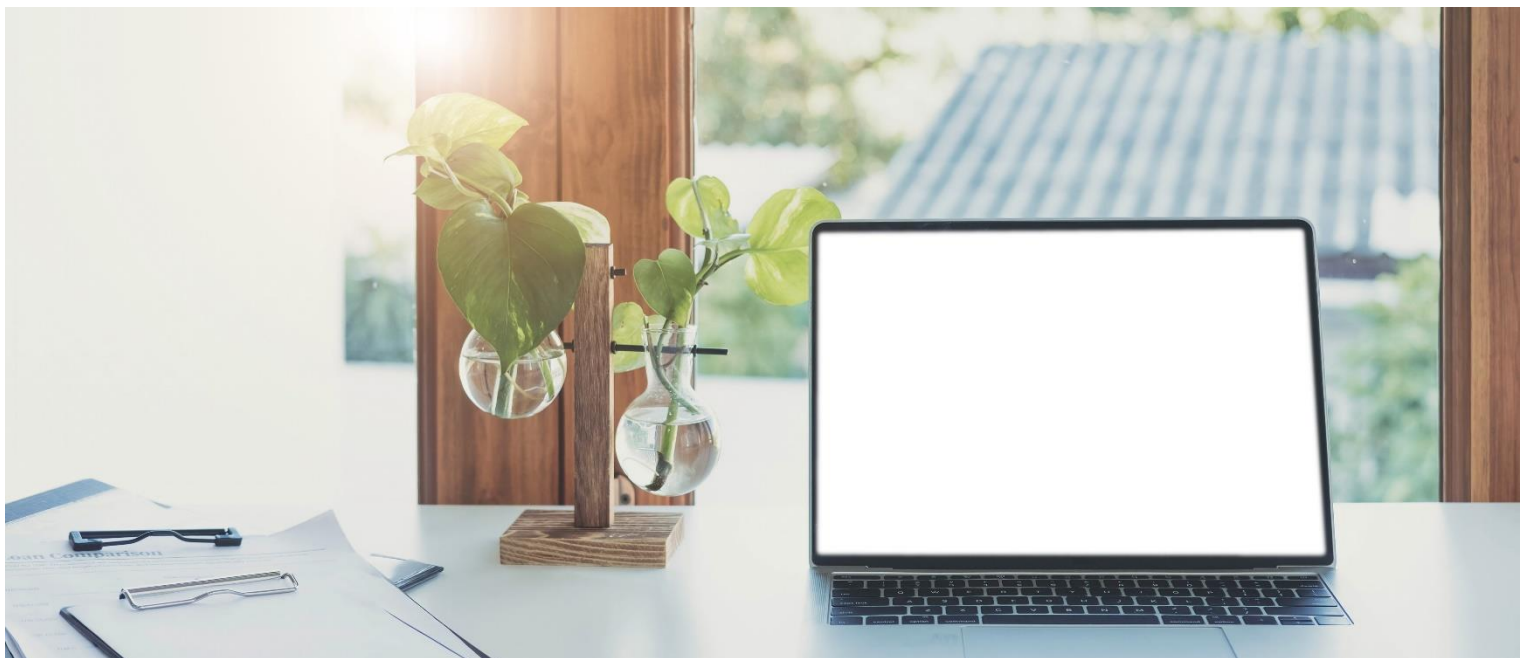
**Nothing synthetic or artificial**

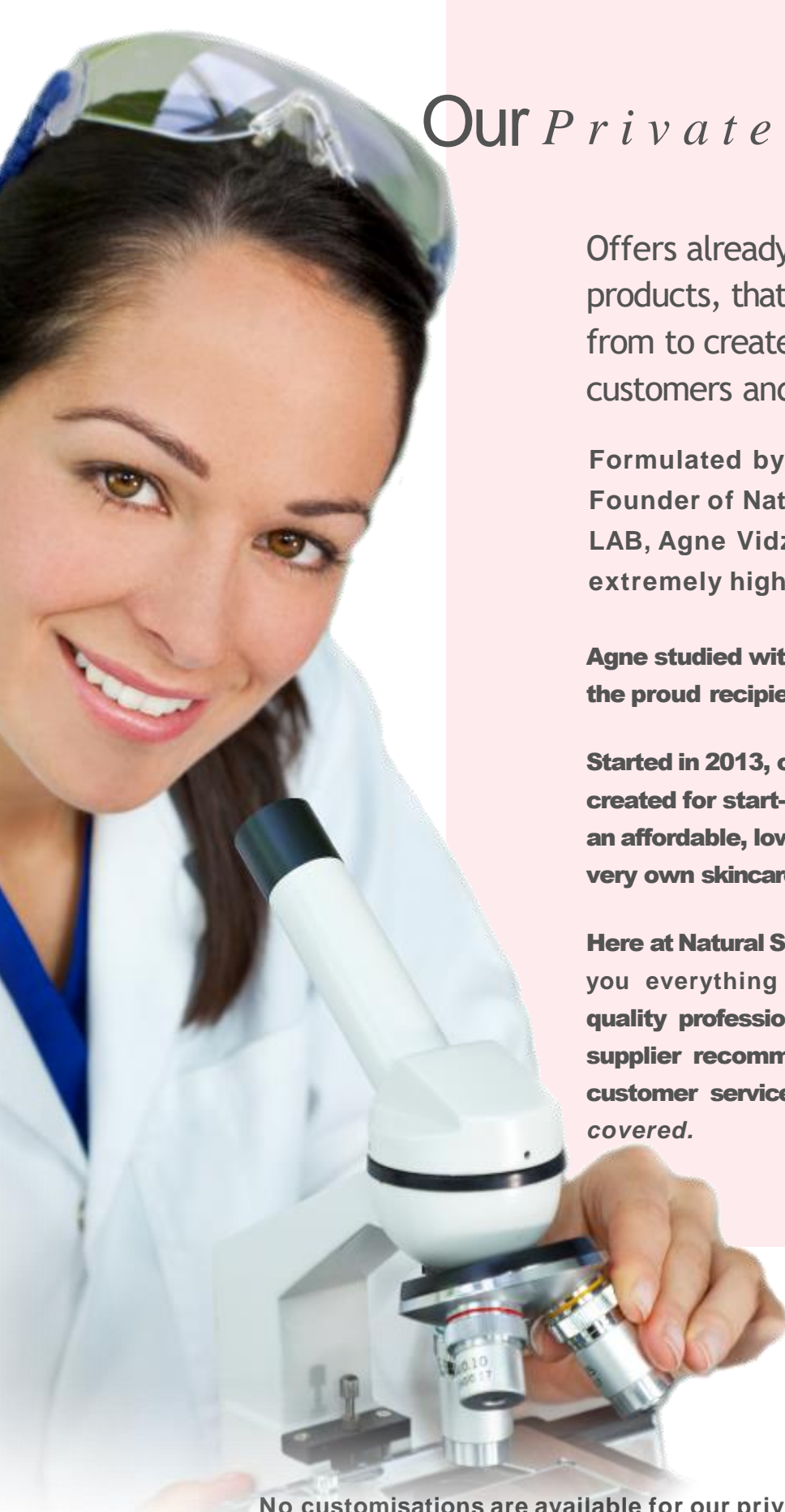


**Sustainable packaging**



**Natural nourishing ingredients**





# Our *Private Label* service...

Offers already formulated skincare products, that you can pick and choose from to create the perfect range for your customers and/or clients.

Formulated by Qualified Chemist and the Founder of Natural Skincare Formulation LAB, Agne Vidz, our products are of an extremely high professional quality.

**Agne studied with Elly Lukas in Melbourne, was the proud recipient of the Steiner Award.**

**Started in 2013, our private label service has been created for start-ups and salon/spa owners, and is an affordable, low-risk and easy way, to create your very own skincare range.**

**Here at Natural Skincare Formulation LAB, we give you everything you need to succeed - high quality professional products, icons, trusted supplier recommendations, professional and kind customer service - *you name it, we've got it covered.***

Our products are  
freshly  
made in UK



No customisations are available for our private label products.  
If you do wish to create a customised product, we suggest that you  
access our [\*\*Private Labels/Full Turkey Service\*\*](#)

**Please note that our Product Customisation Service is only recommended for established businesses, or business owners with a number of years experience behind them.**

This catalogue contains everything you need to know about starting a private label range with

*Natural Skincare  
Formulation LAB.*

**We understand that starting a skincare brand and choosing the right manufacturer is a big decision.**

Please read this catalogue in its entirety so you can decide whether or not **Natural Skincare Formulation LAB** is the right fit for you. We would be honored to work with you if so!

**We welcome any unanswered questions at [skincareformulationlab@gmail.com](mailto:skincareformulationlab@gmail.com)**

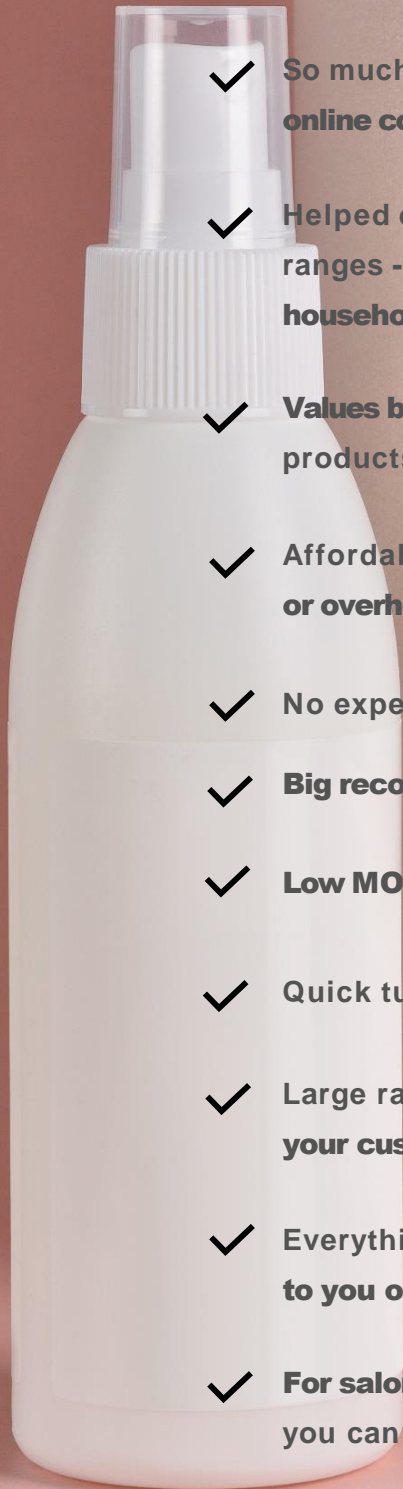


**“My clients love the products and have noticed big changes in their skin.**

I only sell what I truly believe in - I use all the products myself and have had amazing results. It's an absolute pleasure working with Natural Skincare Formulation LAB!”

# Why choose to work with Natural Skincare Formulation LAB?

- ✓ High quality professional products, **backed by a Founder who has 20+ years in the industry.**
- ✓ High manufacturing capacity - **we will be right there by your side as you succeed and grow.**
- ✓ So much more than just a skincare manufacturer - **we offer online courses, personable customer service and lots of support.**
- ✓ Helped over 1000+ entrepreneurs to start their own skincare ranges - **some of which have gone on to become well known household names!**
- ✓ **Values based business that believes in creating high quality products that are kind to the earth, and to animals.**
- ✓ Affordable and low risk, **with no expensive start up costs or overheads.**
- ✓ No experience is necessary to succeed!
- ✓ **Big recommended markups and high profit margins.**
- ✓ **Low MOQ's of just 10 units per product.**
- ✓ Quick turnaround times.
- ✓ Large range of products **so you can choose the perfect mix for your customers/clients skin needs.**
- ✓ Everything you need to grow your business/salon/spa, **handed to you on a platter.**
- ✓ **For salon/spa owners** - professional salon sized products that you can use in treatments with your clients.



# Starting your own skincare range *doesn't* have to be hard

Natural Skincare Formulation LAB was born out of Agne's experience of starting her very own skincare brand.

**Although she successfully grew this brand to six figures, she was up until 3AM most nights mixing products, sterilising equipment, boxing up orders, re-ordering stock and replying to emails.**

*It was exhausting, stressful and not a lot of fun.*

Natural Skincare Formulation LAB takes all this hard work out of the equation for you!

**Working with NSFL makes the process of STARTING and GROWING your own skincare range easy.**

*Let us show you how...*



# How the *e a s y* process works



1

Explore our range of products

**and choose the perfect combination for your brand.**



2

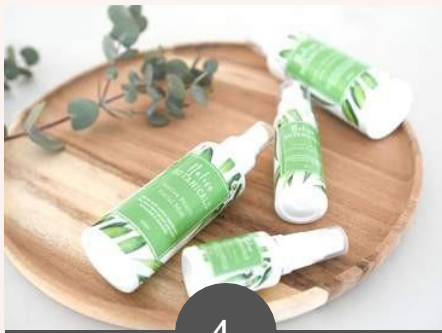
Try our samples



3

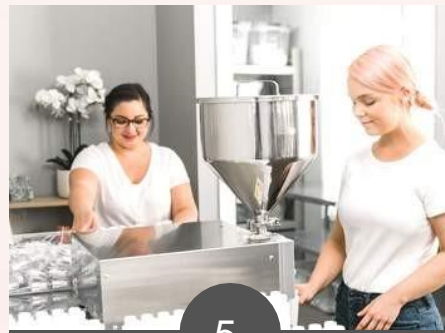
Place your order!

**We have retail, professional (for salon and spa owners) and bulk sized products for you to choose from.**



4

While you wait,  
design and print  
your labels.



5

We make and fill  
your products  
**and ship them to your door**

## Our products contain

- ✓ **Naturally Derived Ingredients**
- ✓ **Sustainable & Ethical Ingredients**
- ✓ **Aromatherapy Oils**
- ✓ **Natural emollients and emulsifiers**
- ✓ **Natural Preservatives**
- ✓ **Australian Oils, Fruits & Extracts**

## We do not use

- ✗ **Sulphates**
- ✗ **Phthalates**
- ✗ **Synthetic Colours**
- ✗ **Synthetic Fragrances**
- ✗ **Parabens**
- ✗ **Petrochemicals**

## *K i n d t o a n i m a l s*

### No Animal Testing

Under no circumstances **do we perform animal testing**. Private Label Skin Care is 100% Cruelty Free.

### 100% Vegan

Our products are 100% Vegan, **with no animal bi-products being used in any of our formulations. Currently there is no “Vegan Certification” option available. We have our own Vegan logo that you can use on your labels which is legally compliant.**





# *Retail* sized products

All our retail sized products come in our **PURE** and **NATURAL** packaging, as shown below. All our packaging can be easily customised with your uniquely branded labels (that you apply on your end).



*Pure* PACKAGING



*Natural* PACKAGING



## *Professional* sized products (for salons or spas)



**Our professional sized products are larger than our retail sized products, and have been created for salon/spa owners to use in their treatments with their clients.**

**Professional products come with a standard label attached. These labels detail the product name, ingredient list and directions for use. We do not add yours or our details or logo on the label. These cannot be ordered without labels.**

**Packaging – Natural or Pure (you choose)**

## *B u l k* sized products

**Our bulk sized products come in plain white tubs (as shown below) and are perfect for you if you want to fill your own unique packaging.**



**For support on how to fill your own packaging, we have created this handy guide for you.**

**[Read it HERE >](#)**

Want to use your own *unique packaging* and have us fill it for you?

**For orders of 500+ items per product, we offer a product filling service.**

**Once your order has been placed, you can post your packaging to our lab and we will fill your unique packaging on your behalf!**

**In less than a month (from the time we receive your packaging), you'll have your products leaving our lab.**



## Shipping

**We use DPD for shipping.**

## Turnaround times

**Samples: 1 to 3 days plus shipping time**

**10-500 units per product: 3 to 30 days plus shipping time**

**500-1000 units per product: 30 to 60 days plus shipping time**

**Salon Professional Products: 14 to 30 days plus shipping time**

**Bulk Products: 14 to 30 days plus shipping time**



*Step 4 :*

## Design and print your labels

**All successful skincare brands require high quality on-brand labels. Over the following pages, you will find information about label design and printing.**

---

### Label Design

You have three options when it comes to designing your product labels:



Hire a Designer



DIY your Label Design



Purchase a Template

# Label Design

We highly recommend:



FAST LABELS

<https://www.fastlabels.co.uk/>

Located in UK

They print luxurious looking labels in gloss, gold, silver, rose gold, clear (and more!) that will help your products stand out from the crowd!

They offer short runs and their work is to a very high standard.

As you will need to apply labels yourself



# SKINCARE



# FACIAL CLEANS'

## Grapefruit Facial Cleanser

**Skin Benefits:** Purifying, Detoxifying, Revitalising

**Description:** Deep cleansing formula, clean up the excess sebum blocked pores, moisturizing without tight, grapefruit rich anthocyanins to make the skin soft and smooth, relieve repairability, enhance skin moisturizing power, maintain skin water and oil balance, make rough and dry skin full of vitality. Help to create a brighter, smoother, more supple skin. Cleans oil, dirt, and makeup, prevent pore blockage, inhibit excessive grease, oil control, clean and fresh your skin, create a clear and healthy face.

**Skin type:** For all skin types

**Ingredients:** Aqua, Cocamidopropyl Betaine, Sodium Cocoyl Isethionate, Glycerine, Propylene Glycol (and) Citrus Grandis [Grapefruit] Fruit Extract, Phenoxyethanol, Ethylhexylglycerin, Citrus nobilis (Red Mandarin) peel oil, Citrus Medica Limonum (Lemon) Peel Oil, Cymbopogon Flexuosus (Lemongrass) Oil

**Direction:** Morning and evening. Apply small amount onto damp skin. Work into a lather and massage gently into face. Rinse thoroughly with water.

**Shelf Life:** 18 months

**Expiry:** Use within 6 months of opening (or use '6M' icon on labels)

Please note: This product has an 18 month shelf life, but once your customer opens their product it is 6 months

Store in a cool dry place

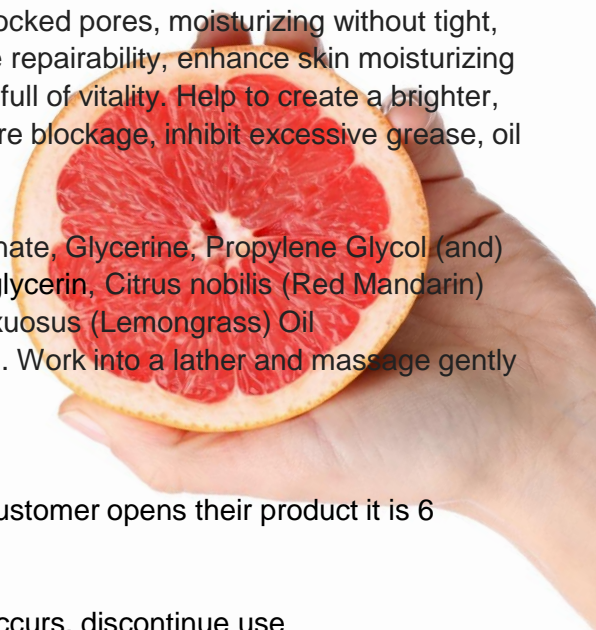
**Caution:** For external use only. Avoid contact with eyes. If irritation occurs, discontinue use

**Net:** 100ML

**Retail size:** 100ml, **Price:** £5.90

**Professional Size:** 250ml, **Price:** £13.50

**Bulk size:** 1L, 5L, **Price:** £45, £205



## Lime & Vanilla Cleansing Oil

**Skin Benefits:** Cleanse, Detox Skin & Prevent Acne. Melt away makeup, SPF and daily impurities while leaving skin looking healthy, fresh and glowing with this buttery multitasking cleanser.

**Description:** This luxurious cleansing oil is incredibly moisturising and promotes cell regeneration and skin barrier repair with fatty acids, Vitamin E and antioxidants. It also contains plant derived Squalane, which is super hydrating and has anti-inflammatory properties that can calm the skin by reducing redness and swelling. Alongside promotes a healthy glow by smoothing and moisturising the skin.

**Skin type:** All skin types

**Ingredients:** Prunus Armeniaca (Apricot) Kernel Oil, Isoamyl Laurate & Isoamyl Cocoate, Caprylic/Capric Triglyceride, Simmondsia Chinensis (Jojoba) Seed Oil, Squalane, Vanilla Planifolia (Vanilla) Fruit Extract, Citrus Aurantifolia (Lime) Peel Oil, Tocopherol, Helianthus annuus Seed Oil, Rosmarinus officinalis Leaf Extract

**Direction:** Massage well onto dry skin, before removing with a warm, damp cloth.

**Shelf Life:** 12 months

**Expiry:** Use within 6 months of opening (or use '6M' icon on labels)

Please note: This product has an 18 month shelf life, but once your customer opens their product it is 6 months

Store in a cool dry place

**Caution:** For external use only. Avoid contact with eyes. If irritation occurs, discontinue use

**Net:** 100ML

**Retail size:** 100 ml, **Price:** £14.00

**Professional Size:** 250ml, **Price:** £33

**Bulk size:** 1L, 5L, **Price:** £120, £580



# FACIAL CLEANSER

## Tangerine Oleogel Cleanser.

**Skin Benefits:** Cleanse, Detox Skin & Prevent Acne. Melt away makeup, SPF and daily impurities while leaving skin looking healthy, fresh and glowing with this buttery multitasking cleanser.

**Description:** This lightweight facial cleansing balm deeply cleanses the skin without leaving an oily residue. It removes even the toughest makeup in a flash, including stubborn eye makeup, while gently nourishing the skin. This luxurious cleansing oil is incredibly moisturising and promotes cell regeneration and skin barrier repair with fatty acids, Vitamin E and antioxidants. It also contains plant derived Squalane, which is super hydrating and has anti-inflammatory properties that can calm the skin by reducing redness and swelling. Alongside promotes a healthy glow by smoothing and moisturising the skin.

**Skin type:** All Skin Types

**Ingredients:** Caprylic/Capric Triglyceride, Glycerin, Aqua, Sucrose Laurate & Sucrose Stearate, Squalane, Prunus Armeniaca (Apricot) Kernel Oil, Simmondsia Chinensis (Jojoba) Seed Oil, Tocopherol, Citrus reticulata (Tangerine) Oil

**Directions:** Massage well onto dry skin, before removing with a warm, damp cloth.

**Shelf Life:** 18 months

**Expiry:** Use within 6 months of opening (or use '6M' icon on labels)

Please note: This product has an 18 month shelf life, but once your customer opens their product it is 6 months

Store in a cool dry place

**Caution:** For external use only. Avoid contact with eyes. If irritation occurs, discontinue use

**Net:** 50ML

**Retail size:** 50ml, **Price:** £10.00

**Professional Size:** 120ml, **Price:** £20.50

**Bulk size:** 1L, 5L, **Price:** £150, £730



## Lemon Cleansing Balm

**Skin Benefits:** Cleanse, Detox Skin & Prevent Acne. Melt away makeup, SPF and daily impurities while leaving skin looking healthy, fresh and glowing with this buttery multitasking cleanser.

**Description:** This lightweight facial cleansing balm deeply cleanses the skin without leaving an oily residue. It removes even the toughest makeup in a flash, including stubborn eye makeup, while gently nourishing the skin. This luxurious cleansing oil is incredibly moisturising and promotes cell regeneration and skin barrier repair with fatty acids, Vitamin E and antioxidants. It also contains plant derived Squalane, which is super hydrating and has anti-inflammatory properties that can calm the skin by reducing redness and swelling. Alongside promotes a healthy glow by smoothing and moisturising the skin.

**Skin type:** All Skin Types

**Ingredients:** Prunus Armeniaca (Apricot) Kernel Oil, Butyrospermum parkii (Shea) Butter, Hydrogenated vegetable oil and Olea europea Fruit oil, Simmondsia Chinensis (Jojoba) Seed Oil, Isoamyl Laurate & Isoamyl Cocoate, Ricinus communis (Castor) Seed Oil, Squalane, Tocopherol, Citrus Medica Limonum (Lemon) Peel Oil

**Directions:** Massage well onto dry skin, before removing with a warm, damp cloth.

**Shelf Life:** 12 months

**Expiry:** Use within 6 months of opening (or use '6M' icon on labels)

Please note: This product has an 18 month shelf life, but once your customer opens their product it is 6 months

Store in a cool dry place

**Caution:** For external use only. Avoid contact with eyes. If irritation occurs, discontinue use

**Net:** 100ML

**Retail size:** 100ml, **Price:** £11

**Professional Size:** 250ml, **Price:** £25 (only pure packaging)

**Bulk size:** 1L, 5L, **Price:** £89, £425



# FACIAL CLEANSER

## Cleansing Dream Oil

**Skin Benefits:** Cleanse, Detox Skin & Prevent Acne

**Description:** This lightweight facial cleansing oil deeply cleanses the skin without leaving an oily residue. It removes even the toughest makeup in a flash, including stubborn eye makeup, while gently nourishing the skin. This luxurious cleansing oil is incredibly moisturising and promotes cell regeneration and skin barrier repair with fatty acids, Vitamin E and antioxidants. It also contains plant derived Squalane, which is super hydrating and has anti-inflammatory properties that can calm the skin by reducing redness and swelling. Alongside promotes a healthy glow by smoothing and moisturising the skin.

**Skin type:** All skin types

**Ingredients:** Prunus Armeniaca (Apricot) Kernel Oil, Polyglyceryl-4 Oleate, Isoamyl Laurate & Isoamyl Cocoate, Caprylic/Capric Triglyceride, Simmondsia Chinensis (Jojoba) Seed Oil, Squalane, Citrus Grandis (Grapefruit) Peel Oil, Tocopherol, Helianthus annuus Seed Oil, Rosmarinus officinalis Leaf Extract

**Direction:** Massage well onto dry skin, before removing with a warm, damp cloth.

**Shelf Life:** 12 months

**Expiry:** Use within 6 months of opening (or use '6M' icon on labels)

Please note: This product has an 18 month shelf life, but once your customer opens their product it is 6 months  
Store in a cool dry place

**Caution:** For external use only. Avoid contact with eyes. If irritation occurs, discontinue use

**Net:** 100ML

**Retail size:** 100ml, **Price:** £14.00

**Professional Size:** 250ml, **Price:** £33

**Bulk size:** 1L, 5L, **Price:** £120, £580,

## Grapefruit Cleansing Balm

**Skin Benefits:** Cleanse, Detox Skin & Prevent Acne. Melt away makeup, SPF and daily impurities while leaving skin looking healthy, fresh and glowing with this buttery multitasking cleanser.

**Description:** This lightweight facial cleansing balm deeply cleanses the skin without leaving an oily residue. It removes even the toughest makeup in a flash, including stubborn eye makeup, while gently nourishing the skin. This luxurious cleansing oil is incredibly moisturising and promotes cell regeneration and skin barrier repair with fatty acids, Vitamin E and antioxidants. It also contains plant derived Squalane, which is super hydrating and has anti-inflammatory properties that can calm the skin by reducing redness and swelling. Alongside promotes a healthy glow by smoothing and moisturising the skin.

**Skin type:** All skin types

**Ingredients:** Glycerin, Caprylic/Capric Triglyceride, Simmondsia Chinensis (Jojoba) Seed Oil, Squalane, Isoamyl Laurate & Isoamyl Cocoate, Sucrose Stearate, Citrus Grandis (Grapefruit) Peel Oil, Tocopherol

**Direction:** Massage well onto dry skin, before removing with a warm, damp cloth.

**Shelf Life:** 12 months

**Expiry:** Use within 6 months of opening (or use '6M' icon on labels)

Please note: This product has an 18 month shelf life, but once your customer opens their product it is 6 months  
Store in a cool dry place

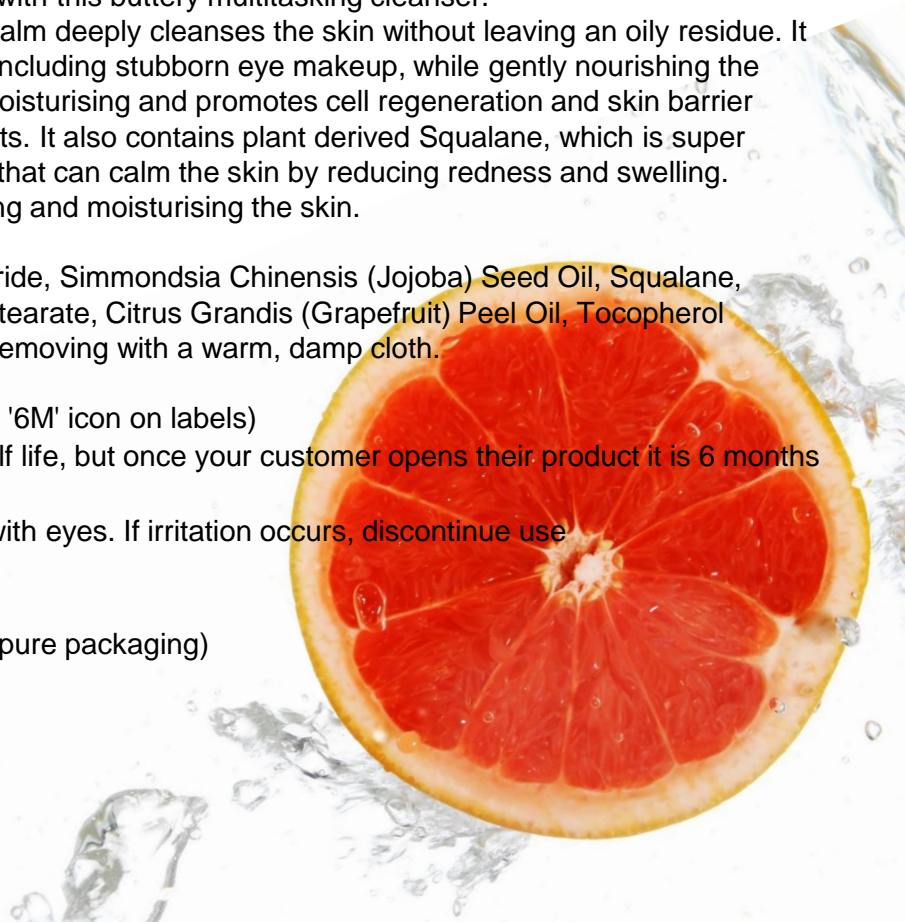
**Caution:** For external use only. Avoid contact with eyes. If irritation occurs, discontinue use

**Net:** 100ML

**Retail size:** 100ml, **Price:** £10.80

**Professional Size:** 250ml, **Price:** £20.90 (only pure packaging)

**Bulk size:** 1L, 5L, **Price:** £85, £400



# FACIAL TONERS

## Prebiotic Facial Mist

**Skin Benefits:** Hydrating, Calming, Protecting

**Description:** A protective facial mist with prebiotics to help strengthen and balance the skin microbiota to protect it against pollution and aggressive chemicals. Calms irritated skin whilst firming and increasing skin hydration. Helps to reduce the appearance of wrinkles and leaves the skin looking younger with an improved skin tone. Lightly spritzed over makeup for a healthy, dewy finish.

Fragranced with soothing Orange and Rose flower waters.

**Skin type:** For all skin types

**Ingredients:** Citrus aurantium (Orange Blossom) floral water, Rosa Damascena Flower Water, Inulin, Aqua, Alpha-glucan oligosaccharide, Phenoxyethanol, Ethylhexylglycerin

**Directions:** Morning and evening. Apply small amount onto damp skin. Work into a lather and massage gently into face. Rinse thoroughly with water.

**Shelf Life:** 12 months

**Expiry:** Use within 6 months of opening (or use '6M' icon on labels)

Please note: This product has an 18 month shelf life, but once your customer opens their product it is 6 months

Store in a cool dry place

**Caution:** For external use only. Avoid contact with eyes. If irritation occurs, discontinue use

**Net:** 100ML

**Retail size:** 100ml, **Price:** £9.60

**Professional Size:** 250ml, **Price:** £20.90

**Bulk size:** 1L, 5L, **Price:** £107, £505

## Acne Prone Skin Toner

**Skin Benefits:** Effectively eliminates excess oil and impurities after cleansing. Highly concentrated, the invigorating toner will leave skin feeling hydrated, nourished and pampered. The purifying toner helps to maintain the natural pH level

**Skin type:** Acne Prone Skin, Oily, Combination Skin

**Ingredients:** Citrus aurantium (Orange Blossom) floral water, Witch Hazel, Aloe barbadensis leaf juice, Niacinamide (Vit B3), Inulin, Aqua, Alpha-glucan oligosaccharide, Phenoxyethanol, Ethylhexylglycerin

**Directions:** Morning and night after cleansing. Spritz 2-3 pumps on a cotton pad and gently wipe over the face and neck

**Shelf Life:** 12 months

**Expiry:** Use within 6 months of opening (or use '6M' icon on labels)

Please note: This product has an 18 month shelf life, but once your customer opens their product it is 6 months

Store in a cool dry place

**Caution:** For external use only. Avoid contact with eyes. If irritation occurs, discontinue use

**Net:** 100ML

**Retail size:** 100ml, **Price:** £11.20

**Professional Size:** 250ml, **Price:** £24.90

**Bulk size:** 1L, 5L, **Price:** £117, £560

# FACIAL TONERS

## Exfoliating Toner

**Skin Benefits:** AHA exfoliator toner to reveal instantly smoother and brighter skin. Blended with fruit AHAs including Glycolic Acid (Sugar Cane), Malic Acid (Apples) and Citric Acid (Citrus Fruits), it helps to boost exfoliation, reduced irritation and dryness and improve skin texture.

**Skin type:** All Skin Types

**Ingredients:** Citrus aurantium (Orange Blossom) floral water, Aloe barbadensis leaf juice Pyrus malus, Citrus medica limonum, Vaccinium myrtillus, Saccharum officinarum, Vitis vinifera, Propylene Glycol, Aqua, Lactic acid, Citric acid, Glycolic acid, Malic acid, Tartaric acid, Phenoxyethanol, Ethylhexylglycerin

**Directions:** Morning and night after cleansing. Spritz 2-3 pumps on a cotton pad and gently wipe over the face and neck

**Shelf Life:** 12 months

**Expiry:** Use within 6 months of opening (or use '6M' icon on labels)

Please note: This product has an 18 month shelf life, but once your customer opens their product it is 6 months  
Store in a cool dry place

**Caution:** For external use only. Avoid contact with eyes. If irritation occurs, discontinue use

**Net:** 100ML

**Retail size:** 100ml, **Price:** £8.20

**Professional Size:** 250ml, **Price:** £17.90

**Bulk size:** 1L, 5L, **Price:** £62, £290,



# FACIAL SERUMS

## Rose Face Serum

**Skin Benefits:** Revitalises, purifies, brightens. Treats inflammation and soothes redness, helps to delay aging. Combats UV damage and dark spots.

**Skin type:** All Skin Types

**Ingredients:** Rosa Damascena (Rose) Flower Water, Rosa canina Fruit Oil, Glycerine, Phenoxyethanol, Ethylhexylglycerin, Lysolecithin, Sclerotium Gum, Xanthan Gum, Pullulan & Silica, Tocopherol

**Directions:** Morning and night. After cleansing. Use 2-3 drops on your palm and lightly pat on your face and neck

**Shelf Life:** 18 months

**Expiry:** Use within 6 months of opening (or use '6M' icon on labels)

Please note: This product has an 18 month shelf life, but once your customer opens their product it is 6 months

Store in a cool dry place

**Caution:** For external use only. Avoid contact with eyes. If irritation occurs, discontinue use

**Net:** 30ML

**Retail size:** 30ml, **Price:** £5.70

**Professional Size:** 100ml, **Price:** £15.50

**Bulk size:** 1L, 5L, **Price:** £145, £695

## Anti-Ageing Eye Serum

**Skin Benefits:** visibly rejuvenate ageing skin, increase cell renewal and restore elasticity whilst firming the skin, Depuffs and brightens skin under eyes

**Skin type:** All Skin Types

**Ingredients:** Aqua, Citrullus Vulgaris (Watermelon) Seed Oil, Euphrasia Officinalis, Glycerine, Lysolecithin, Sclerotium Gum, Xanthan Gum, Pullulan & Silica, Tocopherol, Phenoxyethanol, Ethylhexylglycerin

**Directions:** Morning and night after cleansing. Apply a small amount with the fingertips to the eye contour area and to any fine lines on the face, gently massage and tap until absorbed.

**Shelf Life:** 18 months

**Expiry:** Use within 6 months of opening (or use '6M' icon on labels)

Please note: This product has an 18 month shelf life, but once your customer opens their product it is 6 months

Store in a cool dry place

**Caution:** For external use only. Avoid contact with eyes. If irritation occurs, discontinue use

**Net:** 10ML

**Retail size:** 10ml, **Price:** £4.80

**Professional Size:** 50ml, **Price:** £19.50

**Bulk size:** 500ml, 1L, **Price:** £155, £250

# FACIAL SERUMS

## Rice Pressed Serum – Anti-Ageing

**Skin Benefits:** Repairing, revitalising, nourishing and soothing formula. A combination of Vitamins, Extracts + Q10 helps to revive, enhance skin elasticity and tighten dull skin. Retain moisture and relieve inflammation. High in lauric acid and palmitic acid, known for their antibacterial properties. Reinforce the skin's natural barrier to maintain perfect hydration in one simple step.

**Skin type:** All Skin Types

**Ingredients:** Oryza Sativa (Rice) Bran Oil, Camellia Oleifera (Camellia) Seed Oil, Limnanthes Alba (Cupuacu) Butter, Isoamyl Laurate & Isoamyl Cocoate, Olive squalene, Hydrogenated vegetable oil and Olea europea Fruit oil, C12-15 Alkyl Benzoate, Tocopheryl Acetate, Ubiquinone, Tocopherol, Oryza Sativa (Rice) Bran Extract, Rosa Canina (Rosehip) Seed Extract, Hippophae rhamnoides (Sea Buckthorn) fruit extract, Helianthus annuus seed oil, Rosmarinus officinalis leaf extract, Bisabol

**Directions:** Apply to your face and neck morning and night

**Shelf Life:** 18 months

**Expiry:** Use within 6 months of opening (or use '6M' icon on labels)

Please note: This product has an 18 month shelf life, but once your customer opens their product it is 6 months  
Store in a cool dry place

**Caution:** For external use only. Avoid contact with eyes. If irritation occurs, discontinue use

**Net:** 30ML

**Retail size:** 30ml, **Price:** £7.70

**Professional Size:** 100ml, **Price:** £22.90

**Bulk size:** 1L, 5L, **Price:** £210, £955

## Evening Primrose Pressed Serum – Mature Skin

**Skin Benefits:** This powerful formula does more than just hydrate. It helps to revive stressed skin, boost elasticity, reduce the depth of fine lines and wrinkles, reinforce your skin's natural barrier, brighten, firm and tone. Phytosterols kill free radicals and soften your skin. Even skin tone and promotes collagen production. CoQ10. Vitamin E act as strong antioxidants to prevent the formation of free radicals.

**Skin type:** All Skin Types

**Ingredients:** Oryza Sativa (Rice) Bran Oil, Limnanthes Alba (Cupuacu) Butter, Isoamyl Laurate & Isoamyl Cocoate, Oenothera biennis (Evening Primrose) Oil, Olive squalene, Hydrogenated vegetable oil and Olea europea Fruit oil, C12-15 Alkyl Benzoate, Tocopheryl Acetate, Ubiquinone, Tocopherol, Oenothera Biennis Seed Extract,, Rosa Canina (Rosehip)Seed Extract, Hippophae rhamnoides (Sea Buckthorn) fruit extract, Helianthus annuus seed oil, Rosmarinus officinalis leaf extract, Bisabol

**Directions:** Apply to your face and neck morning and night

**Shelf Life:** 18 months

**Expiry:** Use within 6 months of opening (or use '6M' icon on labels)

Please note: This product has an 18 month shelf life, but once your customer opens their product it is 6 months  
Store in a cool dry place

**Caution:** For external use only. Avoid contact with eyes. If irritation occurs, discontinue use

**Net:** 10ML

**Retail size:** 30ml, **Price:** £8.25

**Professional Size:** 100ml, **Price:** £25.50

**Bulk size:** 1L, 5L, **Price:** £245, £1110

# FACIAL SERUMS

## Puffy Eye Gel

**Skin Benefits:** Tightens and smooths the look of skin, Depuffs and brightens skin under eyes, Provides an instant and long-term well-rested, stress-free under eye area

**Net:** 10 ML

**Skin type:** All Skin Types

**Ingredients:** Citrus Aurantium Amara (Orange) Flower Water, Euphrasia Officinalis, Aqua, Citrullus Vulgaris (Watermelon) Seed Oil, Glycerine, Xanthan Gum, Phenoxyethanol, Ethylhexylglycerin

**Directions:** Morning and night after cleansing, apply under eyes with a gentle tapping motion.

**Shelf Life:** 18 months

**Expiry:** Use within 6 months of opening (or use '6M' icon on labels)

Please note: This product has an 18 month shelf life, but once your customer opens their product it is 6 months

Store in a cool dry place

**Caution:** For external use only. Avoid contact with eyes. If irritation occurs, discontinue use

**Net:** 10ML

**Retail size:** 10ml, **Price:** £3.60

**Professional Size:** 50ml, **Price:** £16.20

**Bulk size:** 500ml, 1L, **Price:** £80, £165



# FACIAL OILS

## Sensitive Skin Facial Oil

**Description:** Provides relief from irritation, inflammation, and other skin concerns caused by acne, acne scars, eczema, rosacea, and others. Facial Oil to Clarify & Calm dry and itchy skin, flaking, and skin redness. Improves skin hydration providing an even skin tone. Assist in reducing facial redness

**Net:** 30 ML

**Skin type:** For all skin types

**Ingredients:** Citrullus Vulgaris (Watermelon) Seed Oil, Cannibis Sativa (Hemp) Seed Oil, Tanacetum annuum (Blue Tancy) Oil, Citrus Medica Limonum (Lemon) Peel Oil, Tocopherol, Helianthus annuus Seed Oil, Rosmarinus officinalis Leaf Extract

**Expert Tips:** Use every morning and evening after cleansing. Massage 3-4 drops over the face and neck

**Shelf Life:** 12 months

**Expiry:** Use within 6 months of opening (or use '6M' icon on labels)

Please note: This product has an 18 month shelf life, but once your customer opens their product it is 6 months  
Store in a cool dry place

**Caution:** For external use only. Avoid contact with eyes. If irritation occurs, discontinue use

**Net:** 30ML

**Retail size:** 30ml, **Price:** £4.85

**Professional Size:** 100ml, **Price:** £15.20

**Bulk size:** 1L, 5L, **Price:** £140, £680

## Golden Rosehip Facial Oil

**Description:** Rosehip oil has been shown to improve skin complexion, firmness, and improve cell turnover. Nourish and moisturize your skin with the anti-aging properties of Vitamin E. It helps improve the appearance of fine lines and wrinkles, redness, dryness, acne scars, dark spots. Helps Improve t hyperpigmentation, and Smooth skin tone for a youthful-looking complexion

Rosehip Oil is very good for treating all kinds of skin infections such as acne, pimples and boils. It also aids the repair of damaged skin tissue that has been scalded, burnt, overexposed to the elements or suffers from varicose veins. Rosehip contains one of the highest levels of Omega 3 among vegetable oils and is also a good source of Omega 6, both of which facilitate the regeneration of the cellular membrane and tissue as well as help normalise skin with large pores.

**Skin Type:** All skin types

**Ingredients:** Rosa canina (Rosehip) Fruit Oil, Tocopherol, Helianthus annuus Seed Oil, Rosmarinus officinalis Leaf Extract

**Directions:** Use every morning and evening after cleansing. Massage 3-4 drops over the face and neck

**Shelf Life:** 12 months

**Expiry:** Use within 6 months of opening (or use '6M' icon on labels)

Please note: This product has an 18 month shelf life, but once your customer opens their product it is 6 months  
Store in a cool dry place

**Caution:** For external use only. Avoid contact with eyes. If irritation occurs, discontinue use

**Net:** 30ML

**Retail size:** 30ml, **Price:** £11.10

**Professional Size:** 100ml, **Price:** £35.20

**Bulk size:** 1L, 5L, **Price:** £ 340, £1650

# FACIAL OILS

## Eczema, Psoriasis and Acne Treatment Facial Oil

**Description:** Hemp seed oil instantly hydrates skin with Omega Fatty Acids. Lightweight, non-greasy formula quickly absorbs into your skin. Rejuvenates and nourishes tight or dry skin and prevents flakiness and itchiness, controls oil production to moisturize without clogging pores. Hemp seed oil restores the skin barrier and helps it to retain moisture, which results in skin that looks healthy, hydrated, and supple.

**Net:** 30 ML

**Skin Type:** Acne Prone Skin, Oily & Combination Skin

**Ingredients:** Cannabis Sativa (Hemp) Seed Oil, Citrus Medica Limonum (Lemon) Peel Oil  
Tocopherol, Lavandula angustifolia Oil, Helianthus annuus Seed Oil, Rosmarinus officinalis Leaf Extract

**Directions:** Use every morning and evening after cleansing. Massage 3-4 drops over the face and neck

**Shelf Life:** 12 months

**Expiry:** Use within 6 months of opening (or use '6M' icon on labels)

Please note: This product has an 18 month shelf life, but once your customer opens their product it is 6 months  
Store in a cool dry place

**Caution:** For external use only. Avoid contact with eyes. If irritation occurs, discontinue use

**Net:** 30ML

**Retail size:** 30ml, **Price:** £5.90

**Professional Size:** 100ml, **Price:** £17.90

**Bulk size:** 1L, 5L, **Price:** £165, £805

## Green Coffee Facial Oil

**Skin Benefits:** Anti-wrinkle and Anti-aging / Firms + Tightens + Uneven Texture

**Description:** Help boost collagen and keep skin firm. Rich in Vitamin C, antioxidant-rich coffee and watermelon oils fade dark spots and scars whilst brightening the complexion. Protects skin from the sun.

**Net:** 30 ML

**Skin Type:** All skin types

**Ingredients:** Citrullus Vulgaris (Watermelon) Seed Oil, Coffea Arabica (Green Coffee) Oil. Coffea Arabica (Coffee) Extract, Tocopherol, Vanilla Planifolia (Vanilla) Fruit Extract, Helianthus annuus Seed Oil, Rosmarinus officinalis Leaf Extract

**Direction:** Use every morning and evening after cleansing. Massage 3-4 drops over the face and neck

**Shelf Life:** 12 months

**Expiry:** Use within 6 months of opening (or use '6M' icon on labels)

Please note: This product has an 18 month shelf life, but once your customer opens their product it is 6 months  
Store in a cool dry place

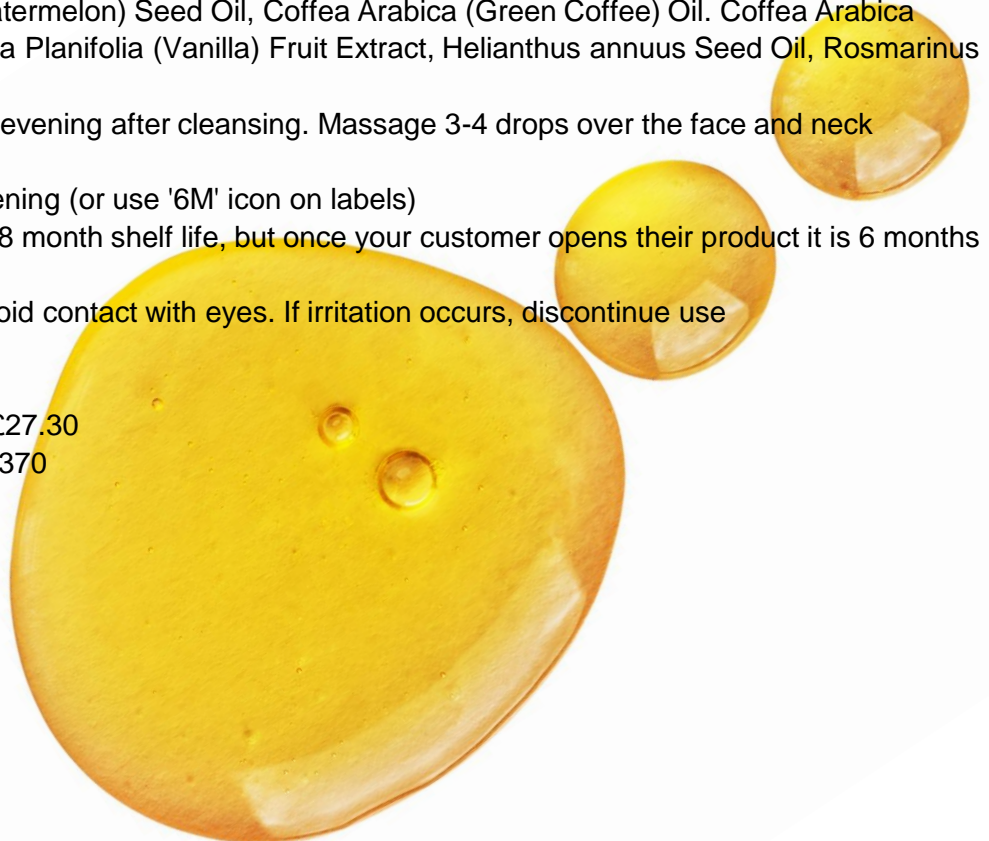
**Caution:** For external use only. Avoid contact with eyes. If irritation occurs, discontinue use

**Net:** 30ML

**Retail size:** 30ml, **Price:** £8.80

**Professional Size:** 100ml, **Price:** £27.30

**Bulk size:** 1L, 5L, **Price:** £265, £1370





# FACIAL OILS

## Antioxidant Oil

**Description:** Watermelon Seed Oil contain a rich source of Beta-carotene, a powerful antioxidant and one of the most beneficial vitamins for the healing and repair of the skin. This high antioxidant content may assist in reducing and combating the signs of premature ageing caused by environmental and lifestyle habits. Its restorative, nourishing and oil balancing properties, help dissolve excess sebum build up, helping you maintain a clear and healthy complexion.

**Skin type:** All skin types

**Ingredients:** Citrullus Vulgaris (Watermelon) Seed Oil, Prunus Armeniaca (Apricot) Kernel Oil, Tocopherol, Helianthus annuus Seed Oil, Rosmarinus officinalis Leaf Extract

**Direction:** Use every morning and evening after cleansing. Massage 3-4 drops over the face and neck

**Shelf Life:** 12 months

**Expiry:** Use within 6 months of opening (or use '6M' icon on labels)

Please note: This product has an 18 month shelf life, but once your customer opens their product it is 6 months

Store in a cool dry place

**Caution:** For external use only. Avoid contact with eyes. If irritation occurs, discontinue use

**Net:** 30ML

**Retail size:** 30ml, **Price:** £4.60

**Professional Size:** 100ml, **Price:** £14

**Bulk size:** 1L, 5L, **Price:** £125, £595

## Plant Retinol + Broccoli Skin Booster

**Description:** This oil quickly repairs damaged skin, smooth wrinkles, firm skin, enhance elasticity, accelerate pigment metabolism and shedding, reduce ultraviolet rays damage, repair damaged spots, achieve multi-functions including anti-oxidation, turbidity, soothing, lighten redness in one step. Continue to pour moisturizing nutrients, rejuvenate the skin and repair vitality, soothe the fragile and uncomfortable skin, improve the skin problems of dullness and premature aging, make the skin delicate and smooth.

**Effect:** Anti-wrinkle and Anti-aging / Firms + Tightens + Uneven Texture

**Skin Type:** All skin types

**Ingredients:** Citrullus Vulgaris (Watermelon) Seed Oil, Brassica Oleracea Italica (Broccoli) Seed Oil, Bakuchiol, Tocopherol, Helianthus annuus Seed Oil, Rosmarinus officinalis Leaf Extract

**Directions:** Use every morning and evening after cleansing. Massage 3-4 drops over the face and neck

**Shelf Life:** 12 Months

**Expiry:** Use within 6 months of opening (or use '6M' icon on labels)

Please note: This product has an 18 month shelf life, but once your customer opens their product it is 6 months

Store in a cool dry place

**Caution:** For external use only. Avoid contact with eyes. If irritation occurs, discontinue use

**Net:** 30ML

**Retail size:** 30ml, **Price:** £13.85

**Professional Size:** 100ml, **Price:** 44.90

**Bulk size:** 1L, 5L, **Price:** £415, £2000

# FACIAL MASKS

## Men's Bentonite Clay Face Mask

**Skin Benefits:** Detoxifies, gentle exfoliate, deeply cleanses, flushes toxins, removes dirt, smooths, nourishes, calm.

**Skin type:** All skin types

**Ingredients:** Helianthus Annuus (Sunflower) Seed Oil, Glycerin, Bentonite Clay, Prunus Amygdalus (Sweet Almond) Seed Oil, Simmondsia Chinensis (Jojoba) Seed Oil, Sucrose Laurate, Olea Europaea (Olive) Stones, Avena Sativa (Oat Silk) Meal Extract, Avena Sativa Kernel (Oatmeal Colloidal) Flour, Citrus Aurantium Dulcis (Orange) Flower Water\*, Citrus aurantifolia (Lime) peel Oil, Tocopherol, Limonene\*\*, Vanilla Planifolia (Vanilla) Fruit Extract, Cinnamomum zeylanicum (Cinnamon) Leaf Oil\*, Eugenol\*\*

\*\*Natural constituent of essential oils

**Directions:** Apply a thick layer onto skin after cleansing. Gently massage and leave for 5-10 minutes. Add water to transform the mask into a milky texture and then rinse off.

**Warning:** Make sure your hands are dry to apply the mask, do not add water into the jar as this will alter the consistency of your new face masque!

**Shelf Life:** 18 months

**Expiry:** Use within 6 months of opening (or use '6M' icon on labels)

Please note: This product has an 18 month shelf life, but once your customer opens their product it is 6 months

Store in a cool dry place

**Caution:** For external use only. Avoid contact with eyes. If irritation occurs, discontinue use

**Net:** 50ML

**Retail size:** 50ml, **Price:** £7.90

**Professional Size:** 200ml, **Price:** £29.10

**Bulk size:** 1L, 5L, **Price:** £135, £650

## Chocolate Face Mask

**Skin Benefits:** Purifies, soothes, rebalances, hydrates, deeply cleanses, nourishes.

**Skin type:** All skin types

**Ingredients:** Prunus Amygdalus (Sweet Almond) Seed Oil, Helianthus Annuus (Sunflower) Seed Oil, Glycerin, Sucrose Laurate, Kaolin Clay, Theobroma Cacao Seed Powder, Citrus Aurantium Dulcis (Orange) Flower Water, Avena Sativa (Oat Silk) Meal Extract, Avena Sativa Kernel (Oatmeal Colloidal) Flour, Vanilla Planifolia (Vanilla) Fruit Extract, Tocopherol

**Directions:** Apply a thick layer onto skin after cleansing. Gently massage and leave for 5-10 minutes. Add water to transform the mask into a milky texture and then rinse off.

**Warning:** Make sure your hands are dry to apply the product, do not add water into the jar as this will alter the consistency of your new face masque!

**Shelf Life:** 18 months

**Expiry:** Use within 6 months of opening (or use '6M' icon on labels)

Please note: This product has an 18 month shelf life, but once your customer opens their product it is 6 months

Store in a cool dry place

**Caution:** For external use only. Avoid contact with eyes. If irritation occurs, discontinue use

**Net:** 50ML

**Retail size:** 50ml, **Price:** £8.90

**Professional Size:** 200ml, **Price:** £ 33.10

**Bulk size:** 1L, 5L, 10L, **Price:** £155, £755



# FACIAL MASKS

## Dual Clean Face Mask

**Skin Benefits:** Melt away makeup, SPF and daily impurities while leaving skin looking healthy, fresh and glowing.

**Skin type:** All skin types

**Ingredients:** Caprylic / Capric Triglyceride, Glycerin, Ricinus communis Seed Oil, Aqua, Simmondsia Chinensis (Jojoba) Seed Oil, Vitis Vinifera (Grape) Seed Oil, Sucrose Stearate, Isoamyl Cocoate, Sucrose Laurate, Avena Sativa (Oat Silk) Meal Extract, Avena Sativa Kernel (Oatmeal Colloidal) Flour, Kaolin, Helianthus Annuus (Sunflower) Seed Oil, Tocopherol, Plum Fruit Extract, Rosmarinus Officinalis (Rosemary) Leaf Extract

**Directions:** Apply with glass spatula. Gently massage onto dry face, including the eye area. Apply warm water to transform into a rich creamy milk. Rinse away.

**Warning:** Make sure your hands are dry to apply the product, do not add water into the jar as this will alter the consistency of your new face cleanser!

**Shelf Life:** 18 months

**Expiry:** Use within 6 months of opening (or use '6M' icon on labels)

Please note: This product has an 18 month shelf life, but once your customer opens their product it is 6 months  
Store in a cool dry place

**Caution:** For external use only. Avoid contact with eyes. If irritation occurs, discontinue use

**Net:** 50ML

**Retail size:** 50ml, **Price:** £7.05

**Professional Size:** 200ml, **Price:** £27.90

**Bulk size:** 1L, 5L, **Price:** £ 120, £570

## Green Coffee Face Mask

**Skin Benefits:** Minimizes fine lines and wrinkles, helps soothe puffy eyes, helps calm acne

**Net:** 50 ML

**Skin type:** All skin types

**Ingredients:** Helianthus Annuus (Sunflower) Seed Oil, Glycerin, Prunus Amygdalus (Sweet Almond) Seed Oil, Coffea Arabica (Green Coffee) Oil, Sucrose Laurate, Kaolin Clay, Theobroma Cacao Seed Powder, Avena Sativa (Oat Silk) Meal Extract, Avena Sativa Kernel (Oatmeal Colloidal) Flour, Tocopherol, Coffea Arabica (Coffee) Extract, Vanilla Planifolia (Vanilla) Fruit Extract

**Directions:** Apply a thick layer with glass spatula onto skin after cleansing. Gently massage with round head of spatula and leave for 5-10 minutes. Add water to transform the mask into a milky texture and then rinse off.

**Warning:** Make sure your hands are dry to apply the product, do not add water into the jar as this will alter the consistency of your new face masque!

**Shelf Life:** 18 months

**Expiry:** Use within 6 months of opening (or use '6M' icon on labels)

Please note: This product has an 18 month shelf life, but once your customer opens their product it is 6 months  
Store in a cool dry place

**Caution:** For external use only. Avoid contact with eyes. If irritation occurs, discontinue use

**Net:** 50ML

**Retail size:** 50ml, **Price:** £ 9.90

**Professional Size:** 200ml, **Price:** £38.10

**Bulk size:** 1L, 5L, **Price:** £170, £830

# FACIAL MASKS

## Acne Prone Skin Face Mask

**Skin Benefits:** Restore balance, draw out impurities & shrink pores, detoxifies & brightens, tightens skin's pores, extracts pollutants and nasties from your skin. Helps reduce inflammation caused by acne and eczema

**Skin type:** Acne Prone Skin, Oily & Combination Skin

**Ingredients:** Glycerin & Prunus amygdalus dulcis (Sweet Almond) Oil & Sucrose Laurate & Citrus Aurantium dulcis (Orange) Fruit Water, Cannibis Sativa (Hemp) Seed Oil, Helianthus Annuus (Sunflower) Seed Oil, Kaolin Clay, Simmondsia Chinensis (Jojoba) Seed Oil, Bentonite Clay, Oat Silk, Citrus Medica Limonum (Lemon) Peel Oil, Lavandula angustifolia Oil, Tocopherol

**Directions:** Apply a thick layer onto skin after cleansing. Gently massage and leave for 5-10 minutes. Add water to transform the mask into a milky texture and then rinse off.

**Warning:** Make sure your hands are dry to apply the product, do not add water into the jar as this will alter the consistency of your new face mask!

**Shelf Life:** 18 months

**Expiry:** Use within 6 months of opening (or use '6M' icon on labels)

Please note: This product has an 18 month shelf life, but once your customer opens their product it is 6 months

Store in a cool dry place

**Caution:** For external use only. Avoid contact with eyes. If irritation occurs, discontinue use

**Net:** 50ML

**Retail size:** 50ml, **Price:** £7.70

**Professional Size:** 200ml, **Price:** £28.20

**Bulk size:** 1L, 5L, **Price:** £ 130, £630

## Green Tea Face Mask

**Skin Benefits:** Fight Acne, Clears Blemishes, Detoxify, Cleans Pores, Reduces Fine Lines & Wrinkles, Tones skin, evens Complexion, and Promotes a Smoother more Youthful Glow.

**Skin type:** Acne Prone Skin, Oily & Combination Skin

**Ingredients:** Bentonite Clay, Matcha Powder, Camillia Sinensis (Green Tea) Powder, Aloe Barbadencis Leaf Powder, Rosa Canina Fruit (Rosehip) Powder, Activated Charcoal

**Directions:** Put a small amount of clay mask in a bowl, mix together a few drops of water (or other liquid of choice) to form a paste. Gently spread face mask evenly all over face, or use as a spot treatment. Keep on for up to 20 mins and gently moisten face and remove mask. Use 1-3 times per week. For sensitive skin leave on for 10 mins and use only 1-2 times a week.

\*Always do a patch test on hand or arm before applying a new product, especially if you have sensitive skin.

**Shelf Life:** 18 months

**Expiry:** Use within 6 months of opening (or use '6M' icon on labels)

Please note: This product has an 18 month shelf life, but once your customer opens their product it is 6 months

Store in a cool dry place

**Caution:** For external use only. Avoid contact with eyes. If irritation occurs, discontinue use

**Net:** 50ML

**Retail size:** 50ml, **Price:** £4.65

**Professional Size:** 200ml, **Price:** £17.10

**Bulk size:** 1L, 5L, **Price:** £70, £320

# FACIAL CREAMS

## Acne Prone Skin Face Cream

**Skin Benefits:** Balancing, Refining, Clarifying

**Description:** Like a cool, refreshing tide sweeping across your skin every morning, this lightweight, organic moisturiser has been carefully formulated for those with oily or blemish-prone skin. Helps reduce inflammation caused by acne and eczema

**Skin type:** Acne Prone Skin, Oily & Combination Skin

**Ingredients:** Aqua, Simmondsia Chinensis (Jojoba) Seed Oil, Witch Hazel, Olive Squalane, Glyceryl Stearate, Cetearyl Alcohol, Sodium Stearoyl Lactylate, Cetearyl Glucoside, Glycerine, Isoamyl Laurate & Isoamyl Cocoate, Panthenol, Phenoxyethanol, Ethylhexylglycerin, Tocopherol, Simmondsia chinensis Seed Oil, Calendula officinalis Flower Extract, Bisabol, Citrus Aurantifolia (Lime) Peel Oil, Cananga Odorata Flower (Ylang Ylang) Extract, Vanilla Planifolia (Vanilla) Fruit Extract

**Directions:** Apply to your face and neck morning and night and wave unbalanced skin goodbye.

**Shelf Life:** 12 months

**Expiry:** Use within 6 months of opening (or use '6M' icon on labels)

Please note: This product has an 18 month shelf life, but once your customer opens their product it is 6 months

Store in a cool dry place

**Caution:** For external use only. Avoid contact with eyes. If irritation occurs, discontinue use

**Net:** 50ML

**Retail size:** 50ml, **Price:** £7.00

**Professional Size:** 200ml, **Price:** £26.5

**Bulk size:** 1L, 5L, **Price:** £120, £580

## Mature Skin Face Cream

**Skin Benefits:** Deeply moisturising, Skin-plumping, Elasticity-boosting

**Description:** Reduces the appearance of fine lines and wrinkles, Delivers long lasting hydration. Nourishes, leaving skin looking plumper and feeling smooth. Nourishes, leaving skin feeling comfortable

**Skin type:** All Skin Types

**Ingredients:** Aqua, Adansonia digitata (Baobab) Seed Oil, Persea Gratissima (Avocado) Oil, Olive squalene, Glyceryl Stearate, Cetearyl Alcohol, Sodium Stearoyl Lactylate, Cetearyl Glucoside, Glycerine, Isoamyl Laurate & Isoamyl Cocoate, Punica Granatum Seed Oil, Phenoxyethanol, Ethylhexylglycerin, Tocopherol, Rosa Canina Seed Extract, Helianthus Annuus Seed Oil, Rosmarinus Officinalis Leaf Extract, Hippophae rhamnoides fruit extract, Bisabol, Citrus Aurantifolia (Lime) Peel Oil, Cananga Odorata Flower (Ylang Ylang) Extract, Vanilla Planifolia (Vanilla) Fruit Extract

**Directions:** Apply to your face and neck morning and night and wave unbalanced skin goodbye.

**Shelf Life:** 12 months

**Expiry:** Use within 6 months of opening (or use '6M' icon on labels)

Please note: This product has an 18 month shelf life, but once your customer opens their product it is 6 months

Store in a cool dry place

**Caution:** For external use only. Avoid contact with eyes. If irritation occurs, discontinue use

**Net:** 50ML

**Retail size:** 50ml, **Price:** £8.50

**Professional Size:** 200ml, **Price:** £33.90

**Bulk size:** 1L, 5L, **Price:** £150, £730

# FACIAL CREAMS

## Anti-Ageing Face Cream

**Skin Benefits:** Deeply moisturising, Skin-plumping, Elasticity-boosting

**Description:** Innovative moisturiser to target age spots and boost skin-cell metabolism. Deeply hydrates, stimulates collagen synthesis and reduces fine lines.

**Skin type:** All Skin Types

**Ingredients:** Aqua, Simmondsia Chinensis (Jojoba) Seed Oil, Adansonia digitata (Baobab) Seed Oil, Olive squalene,

Glyceryl Stearate, Cetearyl Alcohol, Sodium Stearoyl Lactylate, Cetearyl Glucoside, Glycerine, Isoamyl Laurate & Isoamyl Cocoate, Phenoxyethanol, Ethylhexylglycerin, Tocopherol, Rosa Canina Seed Extract, Helianthus Annuus Seed Oil, Rosmarinus Officinalis Leaf Extract

Hippophae rhamnoides fruit extract, Bisabol, Citrus Aurantifolia (Lime) Peel Oil, Cananga Odorata Flower (Ylang Ylang) Extract, Vanilla Planifolia (Vanilla) Fruit Extract

**Directions:** Apply to your face and neck morning and night and wave unbalanced skin goodbye.

**Shelf Life:** 12 months

**Expiry:** Use within 6 months of opening (or use '6M' icon on labels)

Please note: This product has an 18 month shelf life, but once your customer opens their product it is 6 months

Store in a cool dry place

**Caution:** For external use only. Avoid contact with eyes. If irritation occurs, discontinue use

**Net:** 50ML

**Retail size:** 50ml, **Price:** £8.40

**Professional Size:** 200ml, **Price:** £32.20

**Bulk size:** 1L, 5L, **Price:** £145, £695



# BEARD CARE



# BEARD CARE

## Sandalwood Beard Oil

**Description:** Controls beard and stubble frizz with a dry, non-greasy finish. Can also be used as a smoothing serum for hair. Hydrates and conditions beard and stubble. Light and non-greasy. Suitable for most skin types.

**Skin type:** All Skin Types

**Ingredients:** Prunus Amygdalus Dulcis (Sweet Almond) Oil, Oryza Sativa (Rise) Bran Oil, Limnanthes Alba (Meadow Foam) Oil, Simmondsia Chinensis (Jojoba) Seed Oil, Isoamyl Laurate & Isoamyl Cocoate, Tocopherol, Santalum Album Wood Oil, Vanilla Planifolia (Vanilla) Fruit Extract

**Directions:** After cleansing, apply a few drops and massage into beard.

**Shelf Life:** 12 months

**Expiry:** Use within 6 months of opening (or use '6M' icon on labels)

Please note: This product has an 18 month shelf life, but once your customer opens their product it is 6 months

Store in a cool dry place

**Caution:** For external use only. Avoid contact with eyes. If irritation occurs, discontinue use

**Net:** 50ML

**Retail size:** 50ml, **Price:** £6.30

**Professional Size:** 200ml, **Price:** £23.90

**Bulk size:** 1L, 5L, **Price:** £105, £500

## Beard Balm

**Description:** This unique recipe is perfect for nourishing and giving structure to the beard. It adds more volume and leaves a beautiful sheen. Calms frizzy hair, and can help improve the condition of your beard by making the hair stronger. Nourish, Moisture & Protect

**Skin type:** All skin types

**Ingredients:** Mangifera indica (Mango) Seed Butter, Oryza Sativa (Rise) Bran Oil, Limnanthes Alba (MeadowFoam) Oil, Theobroma Cacao (Cocoa) Seed Butter, Isoamyl Laurate & Isoamyl Cocoate, Hydrogenated vegetable oil and Olea europea Fruit oil, Tocopherol, Santalum Album Wood Oil, Citrus Aurantifolia (Lime) Peel Oil, Vanilla Planifolia (Vanilla) Fruit Extract

**Direction:** Rub finger on balm in a circular motion until you have a dollop on your fingertip. Work between palm and fingers until the product feels warm and supple. Apply to beard, styling your beard into its desired shape. An expert tip is to use a Beard Comb to aid you in making sure your beard looks on point.

**Shelf Life:** 12 months

**Expiry:** Use within 6 months of opening (or use '6M' icon on labels)

Please note: This product has an 18 month shelf life, but once your customer opens their product it is 6 months

Store in a cool dry place

**Caution:** For external use only. Avoid contact with eyes. If irritation occurs, discontinue use

**Net:** 50ML

**Retail size:** 50ml, **Price:** £6.70

**Professional Size:** 200ml, **Price:** £25.50

**Bulk size:** 1L, 5L, **Price:** £110, £530



# BODY CARE



# BODY CARE

## Pregnancy Body Balm (suitable for baby's)

**Description:** Restores elasticity to the skin while providing anti-oxidants and hydration. Perfect for everyone and fantastic for pregnancy and stretch mark protection.

**Skin type:** All Skin Types suitable for children 1+

**Ingredients:** Oryza Sativa (Rise) Bran Oil, Limnanthes Alba (Cupuacu) Butter, Hydrogenated vegetable oil and Olea europea Fruit oil, Oryza Sativa (Rise) Bran Extract, Tocopherol, Lavandula angustifolia Oil

**Directions:** Massage onto body to reveal silky smooth skin

**Shelf Life:** 12 months from date of purchase

**Expiry:** Use within 6 months of opening (or use '6M' icon on labels)

Please note: This product has an 18 month shelf life, but once your customer opens their product it is 6 months  
Store in a cool dry place

**Caution:** For external use only. Avoid contact with eyes. If irritation occurs, discontinue use

**Net:** 100ML

**Retail size:** 100ml, **Price:** £13.50

**Professional Size:** 500ml, **Price:** £65

**Bulk size:** 1L, 5L, **Price:** £125, £600



# BODY CARE

## Skin Repair Balm

**Description:** This deeply comforting balm delivers skin-quenching relief for severely dry or stressed skin. Rich in essential lipids, vitamins and trace minerals, it nourishes and revives while simultaneously calming skin.

**Skin type:** All skin types

**Ingredients:** Mangifera indica (Mango) Seed Butter, Citrullus Vulgaris (Watermelon) Oil, Cannabis Sativa (Hemp) Seed Oil, Theobroma Cacao (Cocoa) Seed Butter, Isoamyl Laurate & Isoamyl Cocoate, Squalane, Hydrogenated vegetable oil and Olea europea Fruit oil, Tocopherol, Lavandula angustifolia Oil

**Direction:** Massage well onto skin.

**Shelf Life:** 12 months from date of purchase

**Expiry:** Use within 6 months of opening (or use '6M' icon on labels)

Please note: This product has an 18 month shelf life, but once your customer opens their product it is 6 months

Store in a cool dry place

**Caution:** For external use only. Avoid contact with eyes. If irritation occurs, discontinue use

**Net:** 100ML

**Retail size:** 100ml, **Price:** £12.50

**Professional Size:** 500ml, **Price:** £60.50

**Bulk size:** 1L, 5L, **Price:** £100, £480



# BODY CARE

## Lime & Vanilla Whipped Body Butter

**Description:** Evens out skin tone, pigmentation and reduces fine lines, Soothes and moisturises dry and damaged skin, helps your skin look and feel brighter, Contains anti-inflammatory and antioxidant properties

**Skin type:** All skin types

**Ingredients:** Mangifera indica (Mango) Seed Butter, Oryza Sativa (Rice) Bran Oil, Theobroma Cacao (Cocoa) Seed Butter, Isoamyl Laurate & Isoamyl Cocoate, Cetearyl Alcohol, Citrus Aurantifolia (Lime) Peel Oil, Tocopherol, Vanilla Planifolia (Vanilla) Fruit Extract

**Direction:** Massage onto damp skin

**Shelf Life:** 12 months from date of purchase

**Expiry:** Use within 6 months of opening (or use '6M' icon on labels)

Please note: This product has an 18 month shelf life, but once your customer opens their product it is 6 months  
Store in a cool dry place

**Caution:** For external use only. Avoid contact with eyes. If irritation occurs, discontinue use

**Net:** 100ML

**Retail size:** 100ml, **Price:** £12.20

**Professional Size:** 500ml, **Price:** £60

**Bulk size:** 1L, 5L, **Price:** £105, £500

## Massage Body Oil

**Description:** This balancing massage oil help ease the mind and restore inner balance.

**Skin type:** All Skin Types

**Ingredients:** Prunus amygdalus dulcis (Sweet Almond) Oil, Helianthus Annuus (Sunflower) Seed Oil, Tocopherol, Helianthus annuus Seed Oil, Rosmarinus officinalis Leaf Extract

**Directions:** Apply directly to the skin for massage

**Shelf Life:** 12 months from date of purchase

**Expiry:** Use within 6 months of opening (or use '6M' icon on labels)

Please note: This product has an 18 month shelf life, but once your customer opens their product it is 6 months  
Store in a cool dry place

**Caution:** For external use only. Avoid contact with eyes. If irritation occurs, discontinue use

**Net:** 100ML

**Retail size:** 100ml, **Price:** £6.00

**Professional Size:** 500ml, **Price:** £28

**Bulk size:** 1L, 5L, **Price:** £ 45, £205



# BODY CARE

## Relaxing Body Oil

**Description:** Helps relieve stress and fatigue for a total feeling of well-being. Locks in moisture to leave body skin soft and satin-smooth. Helps soothe tired muscles after exercise.

**Skin type:** All Skin Types

**Ingredients:** Helianthus Annuus (Sunflower) Seed Oil, Citrus Sinensis (Blood Orange) Peel Oil, Lavandula angustifolia Oil, Tocopherol, Helianthus annuus Seed Oil, Rosmarinus officinalis Leaf Extract

**Directions:** Apply directly to the skin for massage

**Shelf Life:** 12 months from date of purchase

**Expiry:** Use within 6 months of opening (or use '6M' icon on labels)

Please note: This product has an 18 month shelf life, but once your customer opens their product it is 6 months

Store in a cool dry place

**Caution:** For external use only. Avoid contact with eyes. If irritation occurs, discontinue use

**Net:** 100ML

**Retail size:** 100ml, **Price:** £6.55

**Professional Size:** 500ml, **Price:** £30

**Bulk size:** 1L, 5L, **Price:** £49, £225

## Swedish Massage Body Oil

**Description:** Helps relieve stress and fatigue for a total feeling of well-being. Locks in moisture to leave body skin soft and satin-smooth. Helps soothe tired muscles after exercise.

**Skin type:** All Skin Types

**Ingredients:** Helianthus Annuus (Sunflower) Seed Oil, Prunus Armeniaca (Apricot) Kernel Oil, Citrus Sinensis (Blood Orange) Peel Oil, Lavandula angustifolia Oil, Tocopherol, Helianthus annuus Seed Oil, Rosmarinus officinalis Leaf Extract

**Directions:** Apply directly to the skin for massage

**Shelf Life:** 12 months from date of purchase

**Expiry:** Use within 6 months of opening (or use '6M' icon on labels)

Please note: This product has an 18 month shelf life, but once your customer opens their product it is 6 months

Store in a cool dry place

**Caution:** For external use only. Avoid contact with eyes. If irritation occurs, discontinue use

**Net:** 100ML

**Retail size:** 100ml, **Price:** £6.90

**Professional Size:** 500ml, **Price:** £32

**Bulk size:** 1L, 5L, **Price:** £50, £230

# BODY CARE

## Pregnancy Body Oil

**Description:** Helps firm, tone and improve elasticity, smoothing the appearance of stretch marks..

**Skin type:** All Skin Types

**Ingredients:** Isoamyl Laurate & Isoamyl Cocoate, Vitis vinifera (Grapeseed) Seed Oil, Oryza Sativa (Rice) Bran Oil, Solanum lycopersicum (Tomato) seed oil, Rosa canina (Rosehip) fruit oil, Squalane, Persea Gratissima (Avocado)seed oil, Tocopherol, Helianthus annuus Seed Oil, Rosmarinus officinalis Leaf Extract

**Directions:** Use on damp or dry skin. Apply a small amount and massage

**Shelf Life:** 12 months from date of purchase

**Expiry:** Use within 6 months of opening (or use '6M' icon on labels)

Please note: This product has an 18 month shelf life, but once your customer opens their product it is 6 months

Store in a cool dry place

**Caution:** For external use only. Avoid contact with eyes. If irritation occurs, discontinue use

**Net:** 100ML

**Retail size:** 100ml, **Price:** £12.00

**Professional Size:** 500ml, **Price:** £58

**Bulk size:** 1L, 5L, **Price:** £100, £480

## Secret For Legs

**Description:** Helps firm, tone and improve elasticity, smoothing the appearance of stretch marks, reduce cellulite

**Skin type:** All Skin Types

**Ingredients:** Isoamyl Laurate & Isoamyl Cocoate, Vitis vinifera (Grapeseed) Seed Oil, Solanum lycopersicum (Tomato) seed oil, Papaver somniferum (Poppy) seed oil, Rosa canina (Rosehip) fruit oil, Squalane, Persea Gratissima (Avocado)seed oil, Tocopherol, Bisabolol, Cymbopogon flexuosus (Sweet Orange) Oil, Citrus grandis (Grapefruit) peel oil, Rosmarinus officinalis (Rosemary) leaf oil, Foeniculum vulgare (Fennel) oil Helianthus annuus Seed Oil, Rosmarinus officinalis Leaf Extract

**Directions:** Use on damp or dry skin. Apply a small amount and massage

**Shelf Life:** 12 months from date of purchase

**Expiry:** Use within 6 months of opening (or use '6M' icon on labels)

Please note: This product has an 18 month shelf life, but once your customer opens their product it is 6 months

Store in a cool dry place

**Caution:** For external use only. Avoid contact with eyes. If irritation occurs, discontinue use

**Net:** 100ML

**Retail size:** 100ml, **Price:** £13.90

**Professional Size:** 500ml, **Price:** £68

**Bulk size:** 1L, 5L, **Price:** £115, £545

# BODY CARE

## Sun Body Lotion

**Description:** This light lotion features Collagen Boost & Bronze for its moisturising, collagen boosting and natural tan enhancing properties. It has no SPF, so should not be used as a sun protection lotion.

**Skin type:** All Skin Types

**Ingredients:** Aqua, Mannose, Glucose, Beta-glucan, Sodium Hyaluronate, Papaver Somniferum (Poppy Seed) Oil, Glycerine, Lysolecithin, Sclerotium Gum, Xanthan Gum, Pullulan & Silica, Tocopherol, Phenoxyethanol, Ethylhexylglycerin

**Directions:** Use on damp or dry skin. Apply a small amount and massage

**Shelf Life:** 12 months from date of purchase

**Expiry:** Use within 6 months of opening (or use '6M' icon on labels)

Please note: This product has an 18 month shelf life, but once your customer opens their product it is 6 months  
Store in a cool dry place

**Caution:** For external use only. Avoid contact with eyes. If irritation occurs, discontinue use

**Net:** 100ML

**Retail size:** 100ml, **Price:** £17.50

**Bulk size:** 1L, 5L, **Price:** £150, £730

## Raspberry Body Exfoliant

**Description:** Removes dead skin cells. Provides intense nourishment to the skin, leaving it feeling soft and supple

**Skin type:** All Skin Types

**Ingredients:** Glycerin, Prunus Armeniaca (Apricot) Kernel Oil, Rubus Idaeus (Raspberry) Seeds, Citrullus Vulgaris (Watermelon) Oil, Sucrose Stearate, Citrus Grandis (Grapefruit) Peel Oil, Tocopherol

**Directions:** Massage the exfoliant into the dry body with dry hands, do not add water into the product. Leave on for 1 to 2 minutes to increase nourishment and hydration. Rinse off.

**Shelf Life:** 12 months from date of purchase

**Expiry:** Use within 6 months of opening (or use '6M' icon on labels)

Please note: This product has an 18 month shelf life, but once your customer opens their product it is 6 months  
Store in a cool dry place

**Caution:** For external use only. Avoid contact with eyes. If irritation occurs, discontinue use

**Net:** 100ML

**Retail size:** 100ml, **Price:** £8.90

**Professional Size:** 500ml, **Price:** £43

**Bulk size:** 1L, 5L, **Price:** £70, £325



# HAND & FOOT CARE





# HAND & FOOT CARE

## Intensive Hand Balm

Leaves hands feeling soft and smooth. Protects against moisture loss

**Description:** Whenever your hands need a treat, apply a small amount into the palms of your hands and gently massage each finger and your palms to soften skin and increase circulation. Soothing and moisturising for dry or chapped hands, apply before bed and wear cotton gloves overnight for a luxurious treatment. A little of this balm goes a long way.

**Skin type:** All skin types

**Ingredients:** Mangifera indica (Mango) Seed Butter, Cannibis Sativa (Hemp) Seed Oil, Theobroma Cacao (Cocoa) Seed Butter, Simmondsia Chinensis (Jojoba) Seed Oil, Isoamyl Laurate & Isoamyl Cocoate, Hydrogenated vegetable oil and Olea europea Fruit oil, Tocopherol, Citrus Medica Limonum (Lemon) Peel Oil

**Direction:** Massage well onto skin

**Shelf Life:** 12 months from date of purchase

**Expiry:** Use within 6 months of opening (or use '6M' icon on labels)

Please note: This product has an 18 month shelf life, but once your customer opens their product it is 6 months  
Store in a cool dry place

**Caution:** For external use only. Avoid contact with eyes. If irritation occurs, discontinue use

**Net:** 50ML

**Retail size:** 50ml, **Price:** £6

**Professional Size:** 200ml, **Price:** £22.80

**Bulk size:** 1L, 5L, **Price:** £100, £480

## Hand & Foot Crème

**Description:** Leaves hands and foot feeling soft and smooth. Protects against moisture loss

**Skin type:** All Skin Types

**Ingredients:** Mangifera indica (Mango) Seed Butter, Cannibis Sativa (Hemp) Seed Oil, Theobroma Cacao (Cocoa) Seed Butter, Isoamyl Laurate & Isoamyl Cocoate, Citrus Medica Limonum (Lemon) Peel Oil, Tocopherol, Simmondsia chinensis Seed Oil, Calendula officinalis Flower Extract

**Directions:** Rub a small amount on the palm of your hands and gently massage all over the foot paying special attention to in between the toes and behind the heels. Massage each toe individually to increase circulation. For dried chapped feet put on some cotton socks overnight to deepen the nourishment and hydration.

Whenever your hands need a treat, apply a small amount into the palms of your hands and gently massage each finger and your palms to soften skin and increase circulation. Soothing and moisturising for dry or chapped hands, apply before bed and wear cotton gloves overnight for a luxurious treatment.

**Shelf Life:** 12 months from date of purchase

**Expiry:** Use within 6 months of opening (or use '6M' icon on labels)

Please note: This product has an 18 month shelf life, but once your customer opens their product it is 6 months  
Store in a cool dry place

**Caution:** For external use only. Avoid contact with eyes. If irritation occurs, discontinue use

**Net:** 50ML

**Retail size:** 50ml, **Price:** £6.80

**Professional Size:** 200ml, **Price:** £26

**Bulk size:** 1L, 5L **Price:** £115, £550

# HAND & FOOT CARE

## Whipped Hand & Foot Scrub

**Description:** Leaves hands and foot feeling soft and smooth. Protects against moisture loss

**Skin type:** All Skin Types

**Ingredients:** Cocos Nucifera (Coconut) Oil, Butyrospermum parkii (Shea) Butter, Ricinus communis (Castor) Seed Oil, Simmondsia Chinensis (Jojoba) Seed Powder, Pumice, Glyceryl Stearate & PEG-100, Stearate, Tocopherol, Cinnamomum zeylanicum (Cinnamon Leaf) Oil

**Directions:** Before a shower or bath, massage a generous handful of scrub onto your hands and/or feet. Apply in sweeping motions, then more intensely in circular motions. Continue, allowing the scrub to melt and spread. Rinse with warm water, then buff away any excess oil with a fluffy washcloth or hand towel (no moisturiser needed). Use once or twice weekly for beautifully smooth, refreshed skin.

(Be careful in the shower as oils can make surfaces slippery!)

**Shelf Life:** 12 months from date of purchase

**Expiry:** Use within 6 months of opening (or use '6M' icon on labels)

Please note: This product has an 18 month shelf life, but once your customer opens their product it is 6 months

Store in a cool dry place

**Caution:** For external use only. Avoid contact with eyes. If irritation occurs, discontinue use

**Net:** 50ML

**Retail size:** 50ml, **Price:** £5.50

**Professional Size:** 200ml, **Price:** £21

**Bulk size:** 1L, 5L, **Price:** £90, £425

## Peppermint Hand & Foot Scrub

**Description:** Removes dead skin cells. Provides intense nourishment to the skin, leaving it feeling soft and supple

**Ingredients:** Glycerin, Prunus Armeniaca (Apricot) Kernel Oil, Oryza Sativa (Rice) Bran Oil, Olive Stone, Sucrose Stearate, Tocopherol, Mentha piperita american (Peppermint) herb oil

**Shelf Life:** 12 months from date of purchase

**Expiry:** Use within 6 months of opening (or use '6M' icon on labels)

Please note: This product has an 18 month shelf life, but once your customer opens their product it is 6 months

Store in a cool dry place

**Caution:** For external use only. Avoid contact with eyes. If irritation occurs, discontinue use

**Net:** 50ML

**Retail size:** 50ml, **Price:** £4.70

**Professional Size:** 200ml, **Price:** £17.50

**Bulk size:** 1L, 5L, **Price:** £75, £355

# HAND & FOOT CARE

## Lemon Cuticle Oil

**Description:** Our softening cuticle oil work to moisturise your cuticles and improve the look of your nails. This cuticle oil protects the cuticle and nail against damage to enhance the health and appearance of the nail and is the perfect first step to your manicure!

**Ingredients:** Prunus Armeniaca (Apricot) Kernel Oil, Cannibis Sativa (Hemp) Seed Oil, Simmondsia Chinensis (Jojoba) Seed Oil, Citrus Medica Limonum (Lemon) Peel Oil, Tocopherol, Helianthus annuus Seed Oil, Rosmarinus officinalis Leaf Extract

**Direction:** Step 1: Apply a small drop of the Cuticle Oil on your bare nails near the cuticle.

Step 2: Massage the cuticle oil into the nail to moisturise and soften the cuticle and promote nail growth.

**Shelf Life:** 12 months from date of purchase

**Expiry:** Use within 6 months of opening (or use '6M' icon on labels)

Please note: This product has an 18 month shelf life, but once your customer opens their product it is 6 months  
Store in a cool dry place

**Caution:** For external use only. Avoid contact with eyes. If irritation occurs, discontinue use

**Net:** 10ML

**Retail size:** 10ml, **Price:** £2.50

**Professional Size:** 50ml, **Price:** £11

**Bulk size:** 500ml, 1L, **Price:** £100, £475,

# LIP CARE



# LIP CARE

## Pressed Lip Serum

**Description:** Add a subtle touch of sparkle and nourish parched lips with our hydrating Lip Shine. Delicately (and naturally) fragranced with Vanilla and Sweet Orange.

**Ingredients:** Glycerin, Ricinus (Castor) communis Seed Oil, Simmondsia Chinensis (Jojoba) Seed Oil, Sucrose Stearate, Tocopherol, Simmondsia chinensis Seed Oil, Calendula officinalis Flower Extract, Citrus Aurantium Dulcis (Sweet Orange) Peel Oil,

**Direction:** Apply Lip Shine to lips as a finishing touch.

**Shelf Life:** 12 months from date of purchase

**Expiry:** Use within 6 months of opening (or use '6M' icon on labels)

Please note: This product has an 18 month shelf life, but once your customer opens their product it is 6 months

Store in a cool dry place

**Caution:** For external use only. Avoid contact with eyes. If irritation occurs, discontinue use

**Net:** 15ML

**Retail size:** 15ml, **Price:** £3

**Professional Size:** 30ml, **Price:** £5

**Bulk size:** 500ml, 1L, **Price:** £80, £145

## Lip Serum

**Description:** Moisturises, Hydrates & Protects. Delicately (and naturally) fragranced with Vanilla and Red Mandarin.

**Ingredients:** Ricinus communis (Castor) Seed Oil, Simmondsia Chinensis (Jojoba) Seed Oil, Tocopherol, Citrus nobilis (Red Mandarin) peel oil, Vanilla Planifolia (Vanilla) Fruit Extract, Helianthus annuus Seed Oil, Rosmarinus officinalis Leaf Extract

**Direction:** Apply Lip Serum to lips as a finishing touch.

**Shelf Life:** 12 months from date of purchase

**Expiry:** Use within 6 months of opening (or use '6M' icon on labels)

Please note: This product has an 18 month shelf life, but once your customer opens their product it is 6 months

Store in a cool dry place

**Caution:** For external use only. Avoid contact with eyes. If irritation occurs, discontinue use

**Net:** 10ML

**Retail size:** 10ml, **Price:** £2.50

**Professional Size:** 30ml, **Price:** £7

**Bulk size:** 500ml, 1L, **Price:** £105, £200

## Lip Balm

**Description:** Perfect for Dry, Damaged, Sore, Cracked & Chapped Lips. Delicately (and naturally) fragranced with Vanilla and Red Mandarin.

**Ingredients:** Ricinus communis (Castor)Seed Oil, Simmondsia Chinensis (Jojoba) Seed Oil, Theobroma Cacao (Cocoa) Seed Butter, Euphorbia cerifera (Candelilla) Wax, Tocopherol, Citrus nobilis (Red Mandarin) peel oil, Vanilla Planifolia (Vanilla) Fruit Extract

**Direction:** Massage onto lips to reveal silky smooth skin.

**Shelf Life:** 12 months from date of purchase

**Expiry:** Use within 6 months of opening (or use '6M' icon on labels)

Please note: This product has an 18 month shelf life, but once your customer opens their product it is 6 months

Store in a cool dry place

**Caution:** For external use only. Avoid contact with eyes. If irritation occurs, discontinue use

**Net:** 15ML

**Retail size:** 15ml, **Price:** £2.70

**Professional Size:** 30ml, **Price:** £5

**Bulk size:** 500ml, 1L, **Price:** £70, £115

# LASH CARE



# LASH CARE

## Lash Conditioning Growth Serum

**Description:** Ready for long, luscious and full natural lashes? Eyelash enhancer serum is a powerful serum that targets brittle, short and sparse lashes! It is fortified with natural vitamins to nourish and infuse your eyelashes with what they need to look longer, fuller and voluminous in 25 days.

**Skin type:** All Hair Types

**Ingredients:** Argania spinosa , Ricinus communis Seed Oil, Helianthus Annuus (Sunflower) Seed Oil, Persea Gratissima (Avocado) Oil, Squalane, Tocopherol, Rosmarinus officinalis (Rosemary) leaf extract

**Directions:** Remove any eye makeup with makeup remover or cleanser. Apply only one stroke of serum at the root of your upper lashes once a day. If applying additional beauty products, wait until the serum has fully dried. Ideally, allow the serum to work overnight. Use consistently once a day for 12 weeks to start seeing amazing results.

**Shelf Life:** 12 months from date of purchase

**Expiry:** Use within 6 months of opening (or use '6M' icon on labels)

Please note: This product has an 18 month shelf life, but once your customer opens their product it is 6 months  
Store in a cool dry place

**Caution:** For external use only. Avoid contact with eyes. If irritation occurs, discontinue use

**Net:** 5ML

**Retail size:** 5ml, **Price:** £2.50

**Bulk size:** 500ml, 1L, **Price:** £220, £420

# HAIR CARE





# HAIR CARE

## Growth Your Hair Serum

**Description:** Made from five active complex oils. This rich and powerful serum helps to increase circulation to the scalp. Promote hair growth, reduce breakage, and calms a dry and itchy scalp. With a blend of Microalgae to help your hair grow longer, thicker and fuller, this innovative serum will allow you to reveal your healthiest looking hair yet.

**Skin type:** All Hair Types

**Ingredients:** Prunus armeniaca (Apricot) kernel oil, Argania spinosa (Argan) kernel oil Isoamyl laurate (from sugar beet), Isoamyl cocoate (from coconut), Ricinus communis (Castor) Seed Oil, Olive squalene, Helianthus annuus (Sunflower) seed oil, Tocopherol (Vit E), Bisabol (Candeia tree), Lavandula angustifolia (Lavender) flower oil, Rosmarinus officinalis (Rosemary) oil, Rosmarinus officinalis (Rosemary) leaf extract, Limonene,\*\* Linalool\*\*

Components that naturally occur in essential oils\*\*

**Directions:** Apply 20 drops to the scalp and massage well. Divide your hair into four sections and apply 5 drops from the pipette directly to the scalp in the first section, massaging well into the scalp. Repeat this on the remaining three sections, applying 20 drops in total. Wrap with film and towel. Leave it for around 2 hours and then rinse. Apply 2-3 times a week.

**Shelf Life:** 12 months from date of purchase

**Expiry:** Use within 6 months of opening (or use '6M' icon on labels)

Please note: This product has an 18 month shelf life, but once your customer opens their product it is 6 months  
Store in a cool dry place

**Caution:** For external use only. Avoid contact with eyes. If irritation occurs, discontinue use

**Net:** 50ML

**Retail size:** 50ml, **Price:** £12.70

**Bulk size:** 1L, 5L,, **Price:** £235, £1150



NATURAL  SKINCARE  
FORMULATION LAB

[www.skincareformulationlab.co.uk](http://www.skincareformulationlab.co.uk)

